



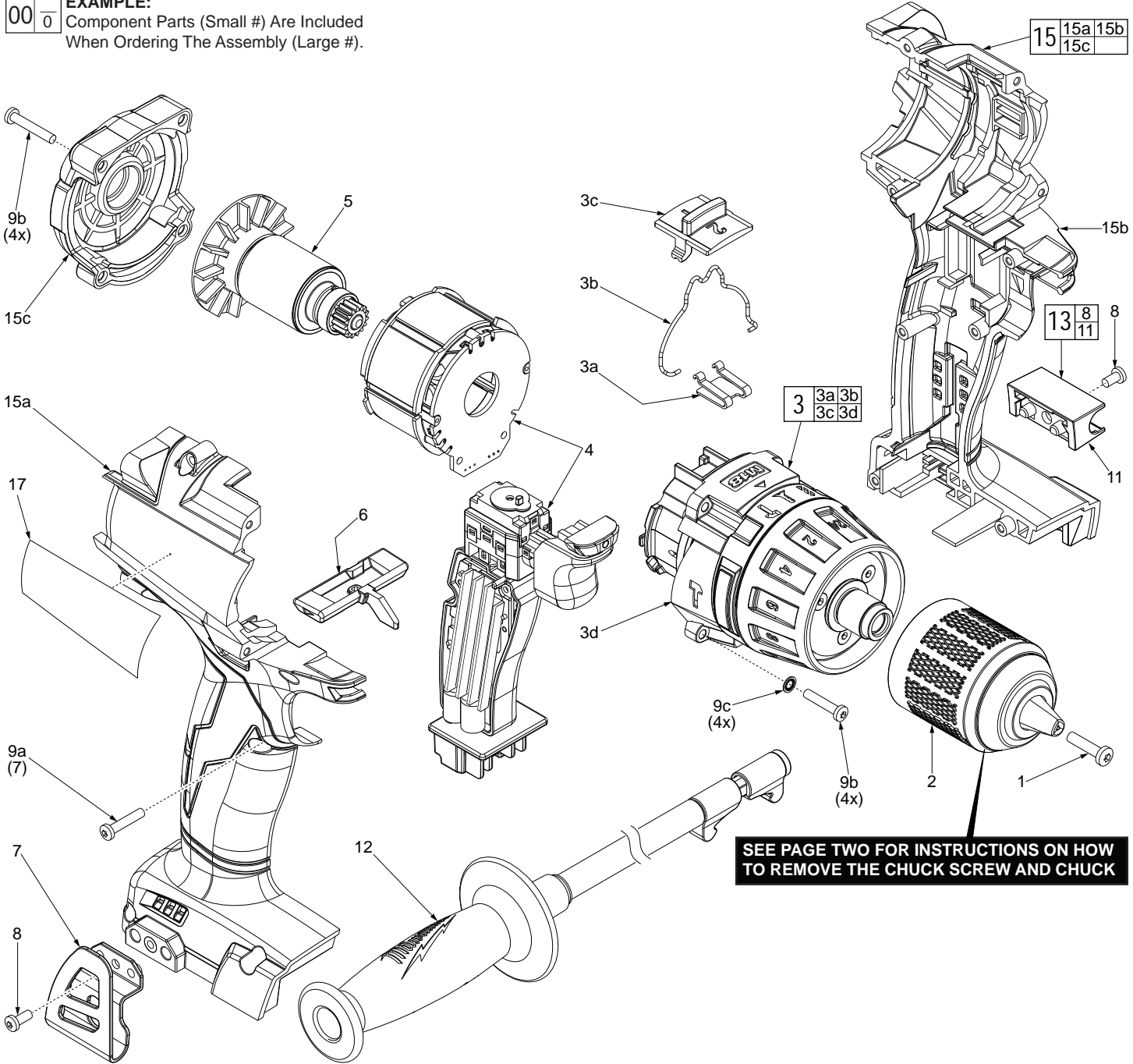
SERVICE PARTS LIST

SPECIFY CATALOG NO. AND SERIAL NO. WHEN ORDERING PARTS		REVISED BULLETIN	DATE
M18™ FUEL™ Hammer-Drill 13mm			Nov. 2015
MODEL NO. M18FPD-0	STARTING SERIAL NO.	WIRING INSTRUCTION SEE PAGE 2	

EXAMPLE:

00	0
----	---

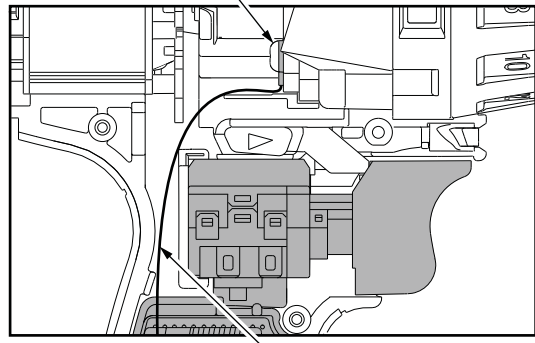
 Component Parts (Small #) Are Included When Ordering The Assembly (Large #).



SEE PAGE TWO FOR INSTRUCTIONS ON HOW TO REMOVE THE CHUCK SCREW AND CHUCK

Rotor Assembly

Ground with bottom right gearcase screw



High Voltage Protection Wire Assembly

Route LED wires down in cavity behind forward/reverse shuttle.

Stator Assembly with Hall PCBA

Watch for pinched wires here. Tuck leads down in cavity behind switch.

LED Assembly

On-Off Switch

Main PCBA

Watch for pinched wires here.

Compression Spring

Battery Connector Block Assembly

REMOVING THE CHUCK SCREW:

Set the Speed Selector Slide (3a) to the #1 setting.

With the aid of a small pencil tip torch (or use an air reduction nozzle on a heat gun) apply heat into the chuck opening, directly to the head of reversing screw just prior to removing the screw.

Place a T40 1/4" torx bit into the head of the reversing screw and place a 1/4" boxed end wrench over the hex on the T40 bit. It is recommended to use a 12"-18" metal tube or pipe as leverage over the boxed wrench. In a clockwise direction apply a slow, steady force on the 'cheater bar' to break the screw loose.

REMOVING THE KEYLESS CHUCK:

Tighten a 1/2" or 10mm Allen Key into the jaws of the chuck. Place the tool into a vise with soft jaws (this will require that you remove the belt clip from the tool). It is recommended to use a 12"-18" metal tube or pipe as leverage over the allen key. In a counter-clockwise direction apply a slow, steady force on the 'cheater bar' to break the chuck loose.

INSTALLING NEW CHUCK AND SCREW:

Torque Chuck to 1095 kg/cm (950.418 in/lbs or 28.93 ft/lbs)
Torque Screw to 461 kg/cm (400.130 in/lbs or 33.34 ft/lbs)